

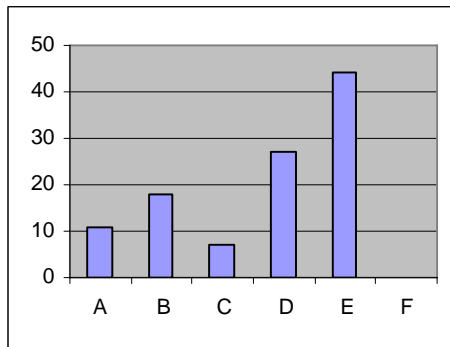
**THE CENTER FOR LOCAL GOVERNMENT  
MUNICIPAL QUESTIONNAIRE  
FEBRUARY 8, 2007**

The Claremont Institute recently sent out the following questionnaire to municipal officials across California, to gauge their opinions on local issues, including property rights, eminent domain, redevelopment, taxation, transparency, religious freedom and freedom of speech. More than 800 mayors, city council members and candidates received the questionnaire. Those who responded included 37 mayors, 25 city council members and 20 candidates. The number of responses totaled 82, or 10% of those contacted.

*Legend: A. Strongly Agree; B. Agree; C. Neutral; D. Disagree; E. Strongly Disagree; F. Don't Know*

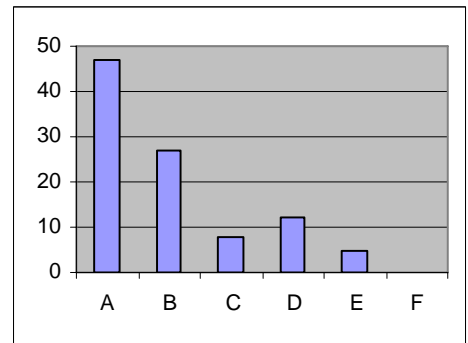
1. City powers should be limited to infrastructure and public safety.

- a. 11%
- b. 18%
- c. 7%
- d. 27%
- e. 44%
- f. >1%



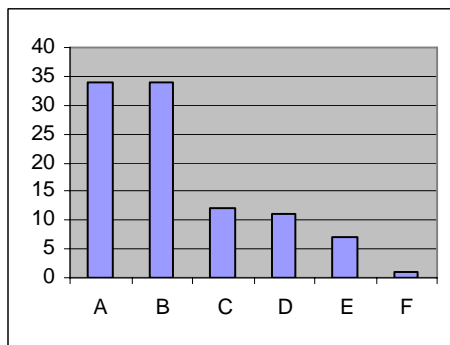
2. In land use policy, city should have broad discretion for controlling growth.

- a. 47%
- b. 27%
- c. 8%
- d. 12%
- e. 5%
- f. 0%



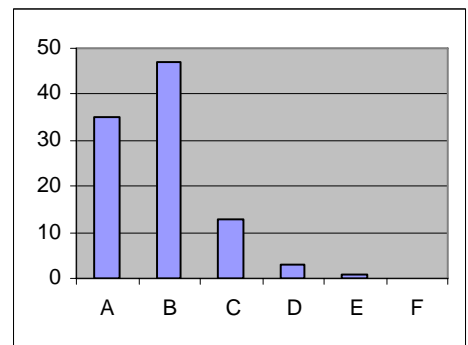
3. City needs to promote commercial development and provide low-cost housing.

- a. 34%
- b. 34%
- c. 12%
- d. 11%
- e. 7%
- f. 1%



4. City needs to set visual standards for business and residential properties.

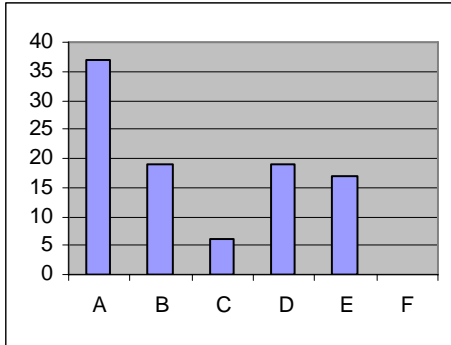
- a. 35%
- b. 47%
- c. 13%
- d. 3%
- e. 1%
- f. 0%



Legend: A. Strongly Agree; B. Agree; C. Neutral; D. Disagree; E. Strongly Disagree; F. Don't Know

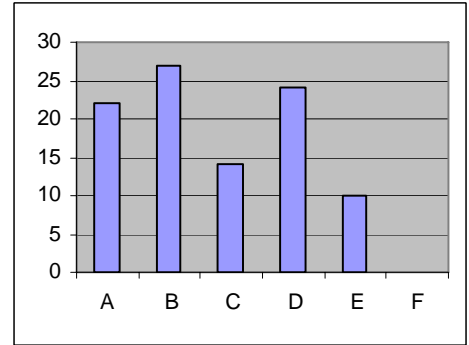
5. Eminent Domain should be used only for public uses, such as streets or schools.

- a. 37%
- b. 19%
- c. 6%
- d. 19%
- e. 17%
- f. 0%



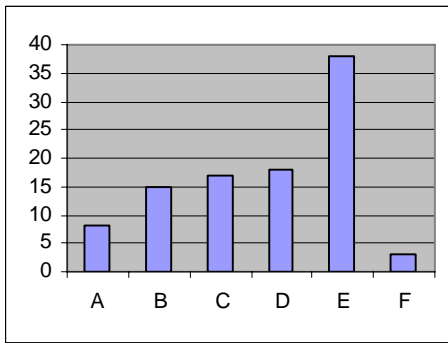
6. Eminent Domain can be used to alleviate blight, such as older homes and strip centers.

- a. 22%
- b. 27%
- c. 14%
- d. 24%
- e. 10%
- f. 0%



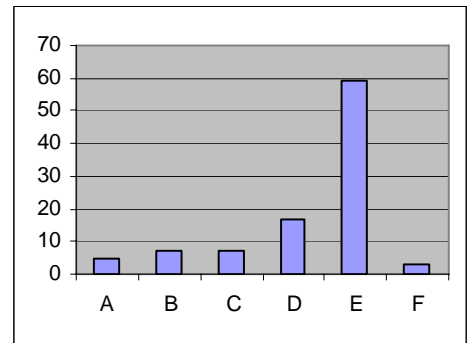
7. Eminent Domain may be used to assure the highest and best use of property.

- a. 8%
- b. 15%
- c. 17%
- d. 18%
- e. 38%
- f. 3%



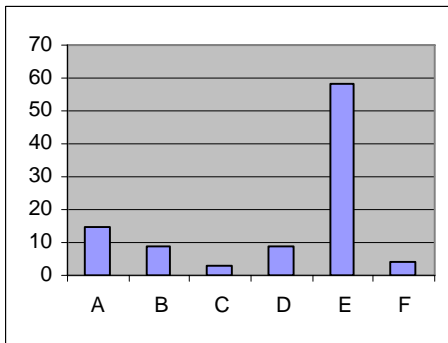
8. Eminent Domain can be used for any purpose the council feels is in the community's best interest.

- a. 5%
- b. 7%
- c. 7%
- d. 17%
- e. 59%
- f. 3%



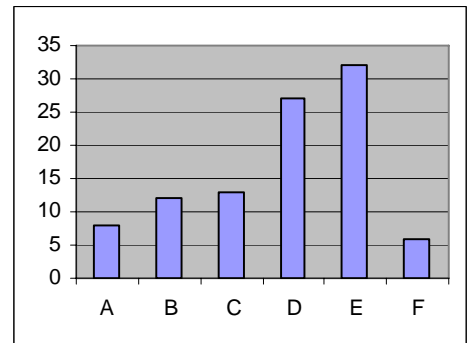
9. I support proposition 90, which would limit the use of Eminent Domain.

- a. 15%
- b. 9%
- c. 3%
- d. 9%
- e. 58%
- f. 4%



10. I oppose any expansion of redevelopment powers or scope in my city.

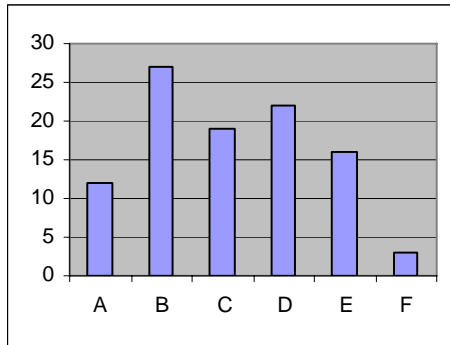
- a. 8%
- b. 12%
- c. 13%
- d. 27%
- e. 32%
- f. 6%



Legend: A. Strongly Agree; B. Agree; C. Neutral; D. Disagree; E. Strongly Disagree; F. Don't Know

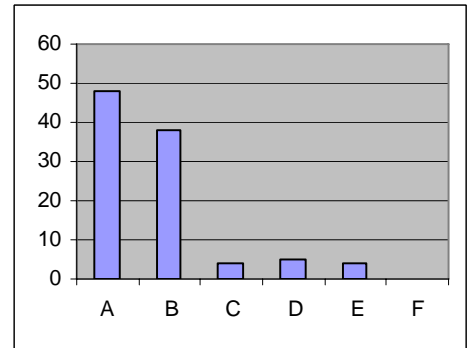
11. Redevelopment powers should be limited and end-dates enforced.

- a.12%
- b.27%
- c.19%
- d.22%
- e.16%
- f.3%



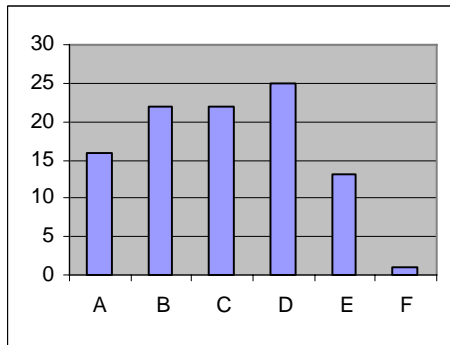
12. Redevelopment can be a needed tool to improve my city.

- a.48%
- b.38%
- c.4%
- d.5%
- e.4%
- f.0%



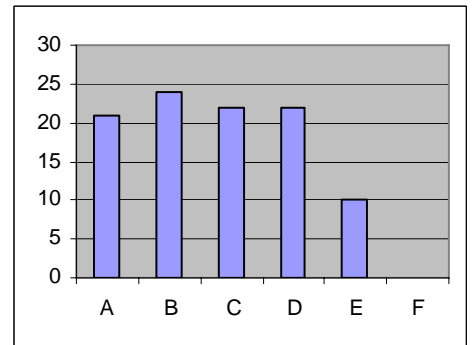
13. Redevelopment powers need to be used aggressively to improve my city.

- a.16%
- b.22%
- c.22%
- d.25%
- e.13%
- f.1%



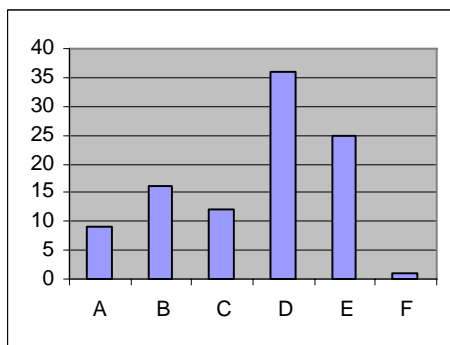
14. The repeal of unneeded taxes and fees is a top priority.

- a. 21%
- b.24%
- c.22%
- d.22%
- e.10%
- f.0%



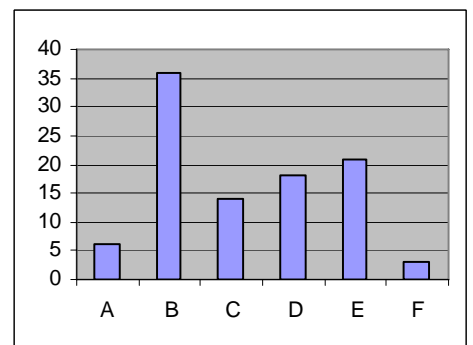
15. Our city government has enough money already—it needs to be spent more efficiently.

- a. 9%
- b.16%
- c. 12%
- d.36%
- e.25%
- f. 1%



16. Our citizens can and will pay more taxes—if we convince them they're really needed.

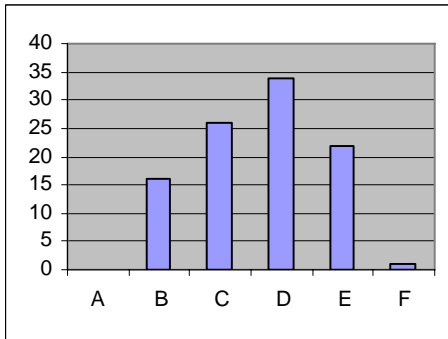
- a.6%
- b.36%
- c.14%
- d.18%
- e.21%
- f.3%



Legend: A. Strongly Agree; B. Agree; C. Neutral; D. Disagree; E. Strongly Disagree; F. Don't Know

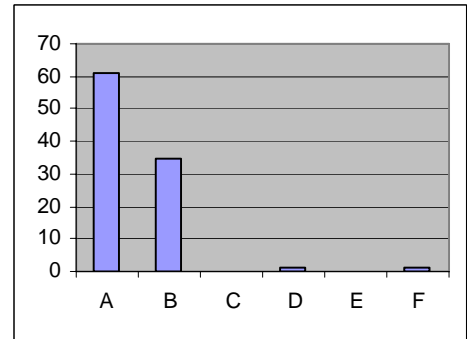
17. Staff knows best as to what additional fees and taxes are needed to run their departments.

- a. 0%
- b. 16%
- c. 26%
- d. 34%
- e. 22%
- f. 1%



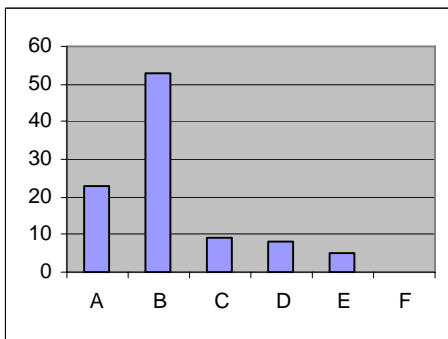
18. Staff's role is to carry out council policy.

- a. 61%
- b. 35%
- c. 0%
- d. 1%
- e. 0%
- f. 1%



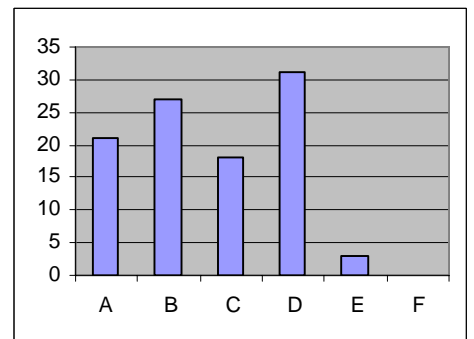
19. Staff's role is to advise to council on policy.

- a. 23%
- b. 53%
- c. 9%
- d. 8%
- e. 5%
- f. 0%



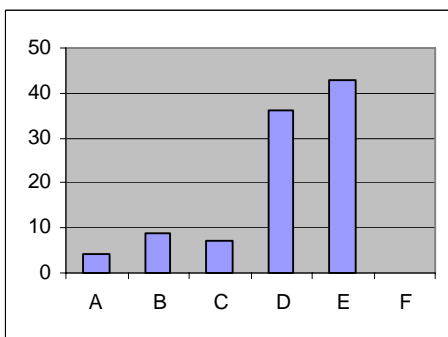
20. Staff will always want to expand their powers and revenue sources.

- a. 21%
- b. 27%
- c. 18%
- d. 31%
- e. 3%
- f. 0%



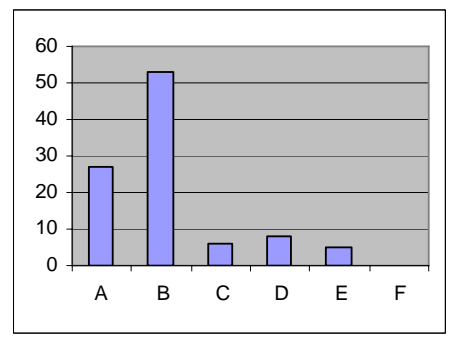
21. Council members should never question or challenge staff members in a public meeting.

- a. 4%
- b. 9%
- c. 7%
- d. 36%
- e. 43%
- f. 0%



22. Land owners have the right to use and develop their own property.

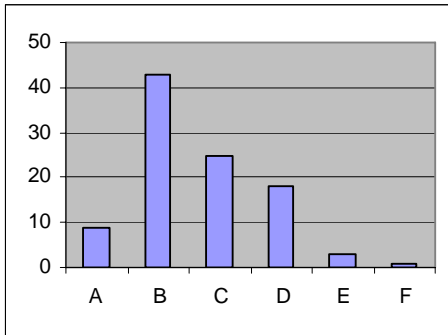
- a. 27%
- b. 53%
- c. 6%
- d. 8%
- e. 5%
- f. 0%



Legend: A. Strongly Agree; B. Agree; C. Neutral; D. Disagree; E. Strongly Disagree; F. Don't Know

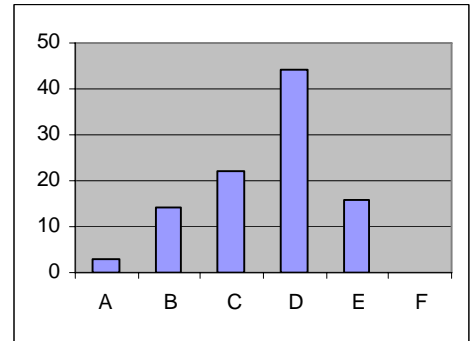
23. Arbitrary and rigid zoning laws need to be changed to reflect market realities.

- a. 9%
- b. 43%
- c. 25%
- d. 18%
- e. 3%
- f. 1%



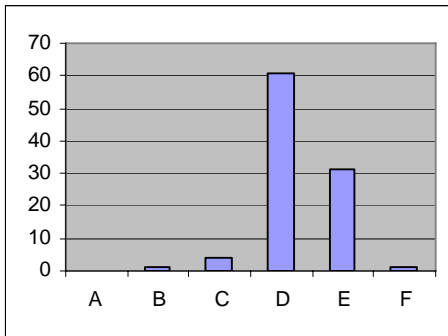
24. The neighbors' approval is necessary before any development is approved.

- a. 3%
- b. 14%
- c. 22%
- d. 44%
- e. 16%
- f. 0%



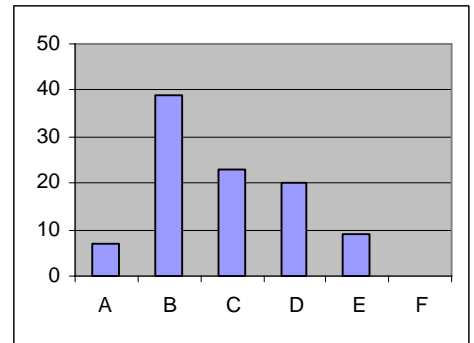
25. Land use decisions should be based on what produces the highest tax revenues for the city.

- a. 0%
- b. 1%
- c. 4%
- d. 61%
- e. 31%
- f. 1%



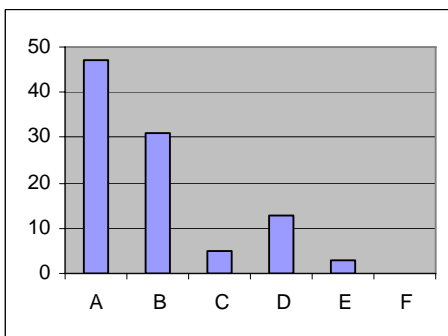
26. A common architectural standard will improve our city's appearance.

- a. 7%
- b. 39%
- c. 23%
- d. 20%
- e. 9%
- f. 0%



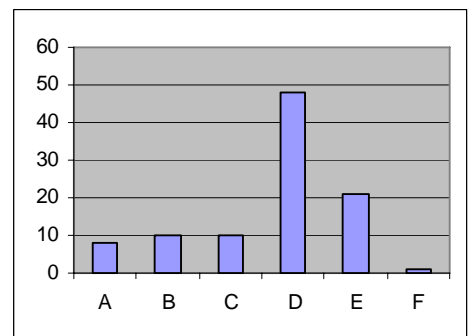
27. All issues before the council should be subject to a thorough and open public discussion.

- a. 47%
- b. 31%
- c. 5%
- d. 13%
- e. 3%
- f. 0%



28. Reporters' questions should be referred to the City Management or City Attorney.

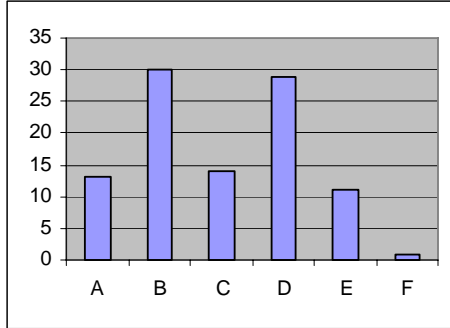
- a. 8%
- b. 10%
- c. 10%
- d. 48%
- e. 21%
- f. 1%



Legend: A. Strongly Agree; B. Agree; C. Neutral; D. Disagree; E. Strongly Disagree; F. Don't Know

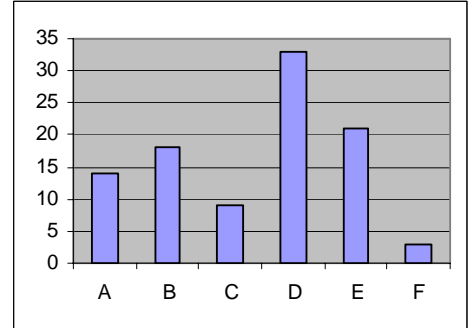
29. Council members' questions should be asked of staff before the meeting, to avoid embarrassment.

- a. 13%
- b. 30%
- c. 14%
- d. 29%
- e. 11%
- f. 1%



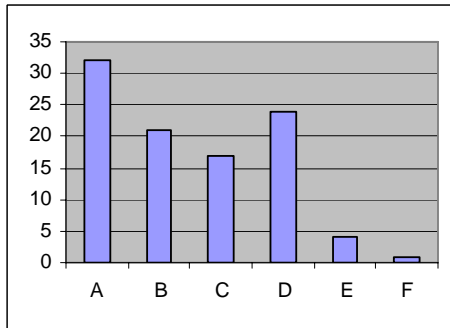
30. Council members are a team; all should support the majority, even when we disagree with it.

- a. 14%
- b. 18%
- c. 9%
- d. 33%
- e. 21%
- f. 3%



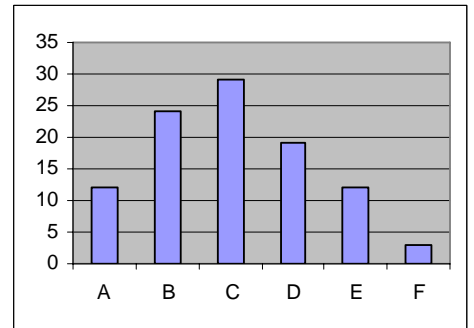
31. Freedom of religion applies to all properties, regardless of zoning.

- a. 32%
- b. 21%
- c. 17%
- d. 24%
- e. 4%
- f. 1%



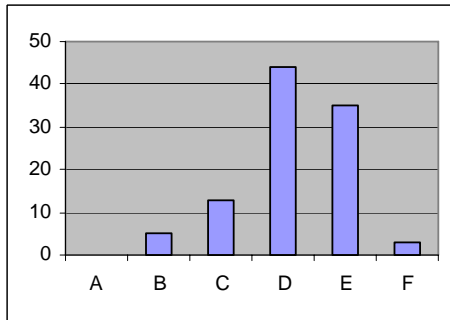
32. Religious institutions must be allowed to grow at their current locations.

- a. 12%
- b. 24%
- c. 29%
- d. 19%
- e. 12%
- f. 3%



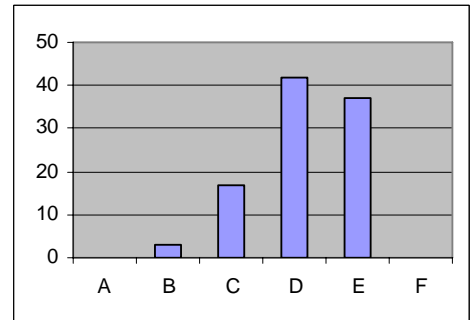
33. Churches are incompatible with residential and commercial zones.

- a. 0%
- b. 5%
- c. 13%
- d. 44%
- e. 35%
- f. 3%



34. Since they pay no taxes, new religious uses of property need to be discouraged.

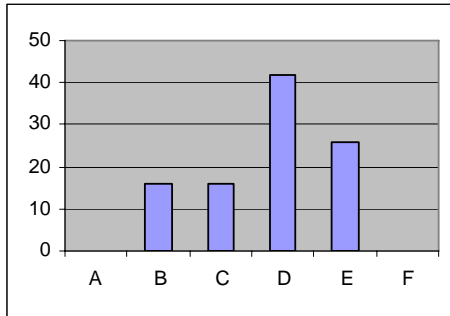
- a. 0%
- b. 3%
- c. 17%
- d. 42%
- e. 37%
- f. 0%



Legend: A. Strongly Agree; B. Agree; C. Neutral; D. Disagree; E. Strongly Disagree; F. Don't Know

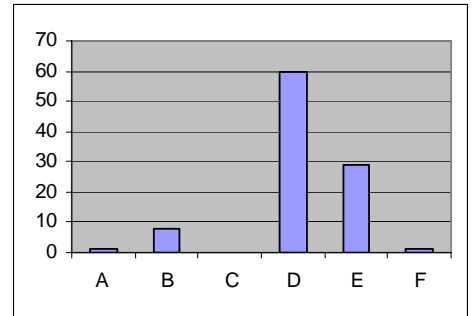
35. Sign codes need to be loosened to reflect markets needs.

- a. 0%
- b. 16%
- c. 16%
- d. 42%
- e. 26%
- f. 0%



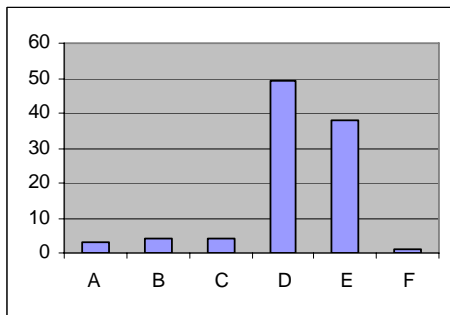
36. Elected officials and staff should never disagree in public.

- a. 1%
- b. 8%
- c. 0%
- d. 60%
- e. 29%
- f. 1%



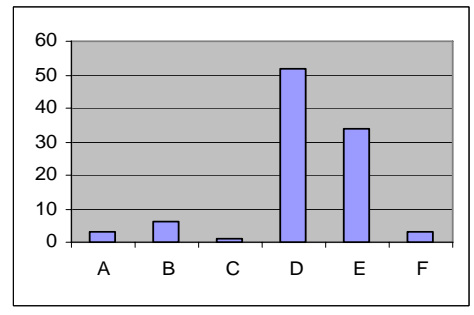
37. All statements to the press should be pre-cleared with the city manager.

- a. 3%
- b. 4%
- c. 4%
- d. 49%
- e. 38%
- f. 1%



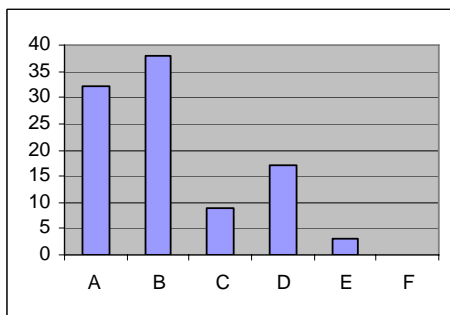
38. Reporters should be avoided, since they'll probably misquote me anyway.

- a. 3%
- b. 6%
- c. 1%
- d. 52%
- e. 34%
- f. 3%



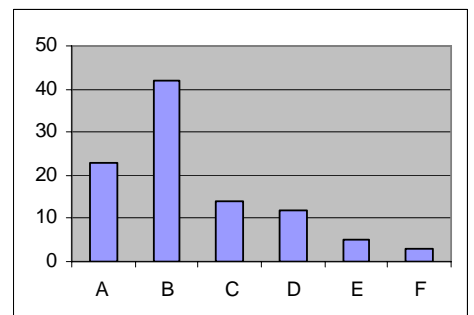
39. Current public employee pensions are unsustainable and need serious reform.

- a. 32%
- b. 38%
- c. 9%
- d. 17%
- e. 3%
- f. 0%



40. Defined benefit pensions should be changed to defined contribution plans for new employees.

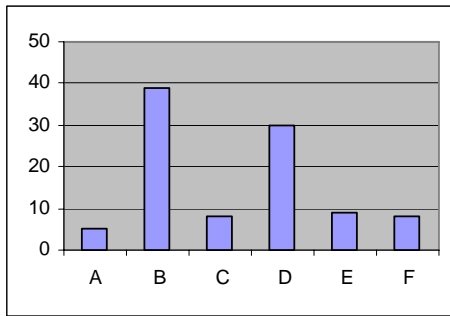
- a. 23%
- b. 42%
- c. 14%
- d. 12%
- e. 5%
- f. 3%



Legend: A. Strongly Agree; B. Agree; C. Neutral; D. Disagree; E. Strongly Disagree; F. Don't Know

41. Public employee unions and the city council are equal partners in collective bargaining.

- a. 5%
- b. 39%
- c. 8%
- d. 30%
- e. 9%
- f. 8%



42. The city should not deduct union dues from employee paychecks.

- a. 13%
- b. 19%
- c. 27%
- d. 17%
- e. 13%
- f. 9%

